



School of Medicine
and Public Health
UNIVERSITY OF WISCONSIN-MADISON

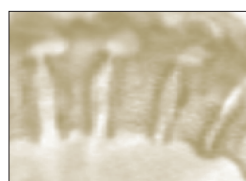
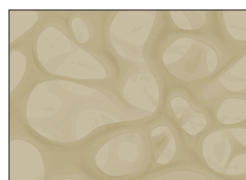
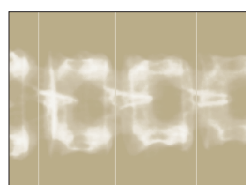
Office of Continuing Professional Development
in Medicine and Public Health
750 Highland Avenue, 1171 HSLC
Madison, WI 53705-2221

Nonprofit Organization
U.S. POSTAGE
PAID
Madison, Wisconsin
Permit No. 658

Wisconsin Osteoporosis Symposium: The Bare Bones of Osteoporosis Care

May 31, 2019

The Fluno Center
Madison, Wisconsin



Wisconsin Osteoporosis Symposium: The Bare Bones of Osteoporosis Care

May 31, 2019
The Fluno Center
Madison, Wisconsin



School of Medicine
and Public Health
UNIVERSITY OF WISCONSIN-MADISON

Provided by

University of Wisconsin
School of Medicine and Public Health
Osteoporosis Clinical Center and Research Program
University of Wisconsin-Madison Interprofessional
Continuing Education Partnership (ICEP)

Target Audience

This activity has been designed to meet the needs of clinicians and other health care professionals looking to enhance their knowledge and skills related to musculoskeletal health for the care of their patients.

Statement of Need

Nationally, over 2 million people sustain osteoporotic fracture annually - a number projected to dramatically increase as our population ages. However, osteoporosis prevention and treatment strategies are rapidly changing. Controversies surrounding optimal nutrition, who to evaluate and treat, available medications and other therapies will be discussed. Clinicians should appreciate the variety of conditions that contribute to fracture risk and that approaches to reduce osteoporosis continue to be under implemented.

Elements of Competence

This CME activity has been designed to change learner competence and performance and focuses on the American Board of Medical Specialties areas of patient care and procedural skills, practice based learning and improvement, and medical knowledge.

Learning Objectives

At the conclusion of this activity, participants should be able to:

- Define recent advances in osteoporosis prevention and treatment and to apply them in practice.
- Recognize controversies surrounding pharmacologic osteoporosis therapy including side effects and the risk/benefit ratio of therapy.
- Determine when and how to perform an evaluation for secondary osteoporosis and what medical conditions contribute to increasing fracture risk.

Planning Committee

Neil Binkley, MD
Rowan Karaman, MD
Diane Krueger, BS, CBDT
Robert Przybelski, MD, MS
Joseph Shaker, MD

Faculty

Paul A. Anderson, MD
Professor
Department of Orthopedics & Rehabilitation
Madison, WI
Sara Arndt, MSN, ACCNS-AG, APNP
Coordinator, Fracture Liaison Service
Department of Orthopaedic Surgery
Medical College of Wisconsin
Milwaukee, WI

Neil Binkley, MD

Professor of Medicine, Divisions of Geriatrics and Endocrinology, Diabetes and Metabolism
Director, Osteoporosis Clinical Research Program
Associate Director, UW Institute on Aging
Staff Physician, Osteoporosis Clinical Center
Madison, WI

Matthew T. Drake, MD, PhD

Associate Professor of Medicine
Division of Endocrinology, Diabetes, Metabolism, Nutrition
Department of Internal Medicine
Mayo Clinic
Rochester, MN

Karen Hansen, MD, MS

Associate Professor of Medicine
Division of Rheumatology
Department of Medicine
Staff Physician, Osteoporosis Clinical Center
Madison, WI

Kristyn Hare, MMS PA-C

Coordinator, UW Health Fracture Liaison Service
Department of Orthopedics & Rehabilitation
Madison, WI

Rowan Karaman, MD

Clinical Instructor
Division of Endocrinology, Diabetes & Metabolism
Department of Medicine
Staff Physician, Osteoporosis Clinical Center
Madison, WI

Diane Krueger, BS, CBDT

Research Program Manager
Osteoporosis Clinical Research Program
Institute on Aging
Madison, WI

Elaine Pelley, MD

Associate Professor of Medicine
Division of Endocrinology, Diabetes & Metabolism
Department of Medicine
Staff Physician Osteoporosis Clinical Center
Madison, WI

Joseph Shaker, MD

Professor of Clinical Medicine
Endocrinology and Metabolism
Medical College of Wisconsin
Milwaukee, WI

Kristin Stevenson, MD

Post-Graduate Trainee
Division of Endocrinology, Diabetes & Metabolism
Department of Medicine
Madison, WI

Erin Zepezauer, MSN, FNP, APNP

Coordinator, Fracture Liaison Service
Department of Orthopaedic Surgery
Froedtert & the Medical College of Wisconsin
Milwaukee, WI

AM		1:15	Bone Disease in the Female Athlete Triad Kristin Stevenson, MD
7:15	Registration and Continental Breakfast		
7:55	Welcome	1:45	Bone Health in Arthroplasty Patients Paul A. Anderson, MD
8:00	Crisis in Osteoporosis Care Neil Binkley, MD	2:15	Q & A
8:15	How Long to Treat: Insight from the ASBMR Task Force on Bisphosphonate Therapy Matthew T. Drake, MD, PhD	2:30	FLS Program Benefits and Challenging Cases Kristyn Hare, MMS, PA-C
8:45	Skeletal Sequela of Bariatric Surgery Joseph Shaker, MD	3:00	Refreshment Break
9:00	How to Approach Skeletal Fragility in Chronic Kidney Disease Karen Hansen, MD, MS	3:30	Breakout 1: Clinical Cases; Fracture Liaison Service Sara Arndt, MSN, CNS, APNP; Kristyn Hare, MMS, PA-C; Erin Zepezauer, MSN, FNP, APNP
9:30	Q & A		Breakout 2: Clinical Cases; Why DXA Quality Matters Neil Binkley, MD; Diane Krueger, BS, CBDT
9:45	Refreshment Break		Breakout 3: Clinical Cases; Real World Osteoporosis Management Joseph Shaker, MD; Rowan Karaman, MD; Matthew Drake, MD, PhD
10:15	The Skeletal Significance of MGUS Matthew T. Drake, MD, PhD		
10:30	Vitamin D: How to Measure and Treatment Goals Rowan Karaman, MD	5:00	Adjourn
10:45	Bone Anabolic Treatment: Who and When Neil Binkley, MD		
11:00	Vertebral Augmentation: The ASBMR Task Force is Wrong Paul A. Anderson, MD		
11:15	Q & A		
11:30	Lunch		
PM			
12:30	Clinical Case Discussions Faculty Panel		
1:00	So What's the Deal with Discontinuing Denosumab? Elaine Pelley, MD		

General Information

Date: Friday, May 31, 2019
Place: The Fluno Center
 601 University Avenue
 Madison, WI 53715
 Telephone: 608-441-7117
 1-877-77-FLUNO
 FAX: 608-441-7133

Parking

A 290-stall parking facility is conveniently located beneath the Fluno Center. The University of Wisconsin managed garage is available for **\$15.00** per day (subject to change without notice). There are two City of Madison parking ramps located on North Lake Street.

Conference Fees

The conference fees are \$225 MD/DO/PhD and \$175 Others. This fee includes the cost of tuition, continental breakfast, breaks, and lunch; and a nonrefundable processing fee of \$50.

Cancellation and Refund Policy

Requests for cancellation must be submitted in writing to help@icep.wisc.edu. Cancellation requests received at least **96** hours prior to the activity will allow a full refund except for the nonrefundable processing fee. No refunds will be made for cancellations received less than **96** hours prior to the activity start date.

Registration/Enrollment Information

Visit <https://ce.icep.wisc.edu/2019-WI-Osteo>

- Select the “**Register/Enroll**” tab
- Select login or register
- If you have a UW-Madison NetID: Select “**Login with my UW-Madison NetID**”
- If you do not have a UW-Madison NetID, under Visitor: Select “**I already have an account**” OR “**Create an account login and password**”
- Follow any prompts to complete and/or update your profile information
- Once you are logged in, navigate back to: <https://ce.icep.wisc.edu/2019-WI-Osteo>
- Click the “**Register**” tab, select your Fee/Eligible Discount, complete any additional registration questions, and click, “**Add to Cart**”
- Select “**Checkout**” and follow the prompts to pay for the conference

Contact help@icep.wisc.edu if you need assistance.

Housing

Rooms have been reserved at the conference site. The conference rate is \$159 (single)/\$169 (2 beds). Please call the Fluno Center directly to arrange your accommodation 877-77-FLUNO or 608-441-7117. The Fluno Center will release the block on **April 30, 2019**.

Conference Attire

To ensure your comfort in the conference room, please bring a sweater or jacket to accommodate temperature variations.

For Further Information

For conference information contact: Terese Bailey, OCPD in Medicine and Public Health, 1171 HSLC, 750 Highland Ave, Madison, WI 53705; telephone 608-265-2046; or e-mail terese.bailey@wisc.edu.

CREDIT

Accreditation Statement

In support of improving patient care, the University of Wisconsin–Madison ICEP is jointly accredited by the Accreditation Council for Continuing Medical Education (ACCME), the Accreditation Council for Pharmacy Education (ACPE), and the American Nurses Credentialing Center (ANCC) to provide continuing education for the healthcare team.



Credit Designation Statement

The University of Wisconsin–Madison ICEP designates this live activity for maximum of 7 *AMA PRA Category 1 Credits™*. Physicians should claim only the credit commensurate with the extent of their participation in the activity.

Continuing Education Units

The University of Wisconsin–Madison, as a member of the University Continuing Education Association (UCEA), authorizes this program for .07 continuing education units (CEUs) or 7 hours.

American Academy of Family Physicians

Application for CME credit has been filed with the American Academy of Family Physicians. **Determination of credit is pending.**

Policy on Disclosure

It is the policy of the University of Wisconsin–Madison ICEP that the faculty, authors, planners, and other persons who may influence content of this CE activity disclose all relevant financial relationships with commercial interests in order to allow CE staff to identify and resolve any potential conflicts of interest. Faculty must also disclose any planned discussion of unlabeled/unapproved uses of drugs or devices during their presentation(s). Detailed disclosures will be made prior to the beginning of the activity.

The University of Wisconsin provides equal opportunities in employment and programming, including Title IX requirement.

The University of Wisconsin School of Medicine and Public Health fully complies with the legal requirements of the ADA and the rules and regulations thereof. If any participant in this educational activity is in need of accommodations, please notify Terese Bailey in order to receive service. Please call 608-265-2046.